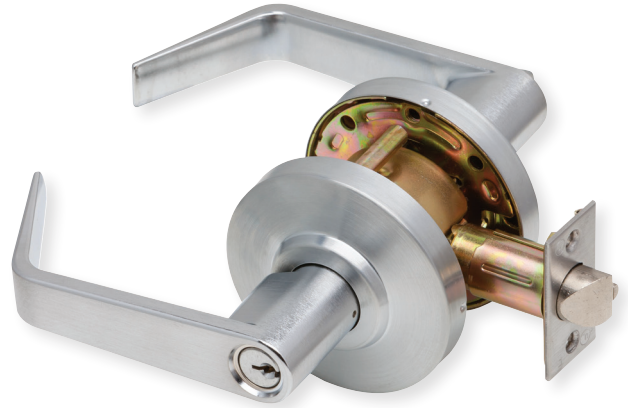


C2000 Series

Grade 2 cylindrical lock



Specifications

- Grade 2, UL listed 3 hour
- 1³/₈" to 1³/₄" door range standard
- Brass (605) ball knobs come packaged with square-corner beveled latch with 2³/₈" backset and ANSI 1¹/₄" x 2¹/₄" T-Strike standard.
- All other functions (except dummy) include 1¹/₈" x 2¹/₄" square-corner beveled latch with 2³/₈" backset and ANSI 1¹/₄" x 4⁷/₈" curved lip strike (30-148)
- Schlage C cylinders are 6-pin cylinders keyed 6, keyed different
- Accommodate SFIC to accept 6-pin/7-pin

Locksets

Product description	Lever feature	Function	Trim	Finish	Cylinder
C2000-SDUM-R-626	Non-clutching	Single Dummy Trim	Regular	626	N/A
C2000-SDUM-R-613	Non-clutching	Single Dummy Trim	Regular	613	N/A
C2000-SDUM-R-605	Non-clutching	Single Dummy Trim	Regular	605	N/A
C2000-SDUM-C-626	Non-clutching	Single Dummy Trim	Curved	626	N/A
C2000-SDUM-C-613	Non-clutching	Single Dummy Trim	Curved	613	N/A
C2000-SDUM-B-630	Non-clutching	Single Dummy Trim	Ball	630	N/A
C2000-SDUM-B-613	Non-clutching	Single Dummy Trim	Ball	613	N/A
C2000-PASS-R-626	Non-clutching	Passage (F75)	Regular	626	N/A
C2000-PASS-R-613	Non-clutching	Passage (F75)	Regular	613	N/A
C2000-PASS-R-605	Non-clutching	Passage (F75)	Regular	605	N/A
C2000-PASS-C-626	Non-clutching	Passage (F75)	Curved	626	N/A
C2000-PASS-C-613	Non-clutching	Passage (F75)	Curved	613	N/A
C2000-PASS-B-630	Non-clutching	Passage (F75)	Ball	630	N/A
C2000-PASS-B-613	Non-clutching	Passage (F75)	Ball	613	N/A
C2000-PASS-B-605	Non-clutching	Passage (F75)	Ball	605	N/A
C2000-PRIV-R-626	Non-clutching	Privacy (F76)	Regular	626	N/A
C2000-PRIV-R-613	Non-clutching	Privacy (F76)	Regular	613	N/A
C2000-PRIV-R-605	Non-clutching	Privacy (F76)	Regular	605	N/A
C2000-PRIV-C-626	Non-clutching	Privacy (F76)	Curved	626	N/A
C2000-PRIV-C-613	Non-clutching	Privacy (F76)	Curved	613	N/A
C2000-PRIV-B-630	Non-clutching	Privacy (F76)	Ball	630	N/A
C2000-PRIV-B-613	Non-clutching	Privacy (F76)	Ball	613	N/A
C2000-PRIV-B-605	Non-clutching	Privacy (F76)	Ball	605	N/A
C2000-CL-ENTR-R-626-KDC	Clutching	Entry/Office (F109)	Regular	626	6-pin, Schlage C, KD
C2000-ENTR-R-626-KDC	Non-clutching	Entry/Office (F109)	Regular	626	6-pin, Schlage C, KD
C2000-CL-ENTR-R-613-KDC	Clutching	Entry/Office (F109)	Regular	613	6-pin, Schlage C, KD
C2000-ENTR-R-613-KDC	Non-clutching	Entry/Office (F109)	Regular	613	6-pin, Schlage C, KD
C2000-ENTR-R-605-KDC	Non-clutching	Entry/Office (F109)	Regular	605	6-pin, Schlage C, KD
C2000-CL-ENTR-R-626-SFIC	Clutching	Entry/Office (F109)	Regular	626	Less SFIC
C2000-ENTR-R-626-SFIC	Non-clutching	Entry/Office (F109)	Regular	626	Less SFIC

C2000 Series
Grade 2 cylindrical lock

Locksets

Product description	Lever feature	Function	Trim	Finish	Cylinder
C2000-CL-ENTR-R-613-SFIC	Clutching	Entry/Office (F109)	Regular	613	Less SFIC
C2000-ENTR-R-613-SFIC	Non-clutching	Entry/Office (F109)	Regular	613	Less SFIC
C2000-ENTR-R-605-SFIC	Non-clutching	Entry/Office (F109)	Regular	605	Less SFIC
C2000-CL-ENTR-C-626-KDC	Clutching	Entry/Office (F109)	Curved	626	6-pin, Schlage C, KD
C2000-ENTR-C-626-KDC	Non-clutching	Entry/Office (F109)	Curved	626	6-pin, Schlage C, KD
C2000-CL-ENTR-C-613-KDC	Clutching	Entry/Office (F109)	Curved	613	6-pin, Schlage C, KD
C2000-ENTR-C-613-KDC	Non-clutching	Entry/Office (F109)	Curved	613	6-pin, Schlage C, KD
C2000-CL-ENTR-C-626-SFIC	Clutching	Entry/Office (F109)	Curved	626	Less SFIC
C2000-ENTR-C-626-SFIC	Non-clutching	Entry/Office (F109)	Curved	626	Less SFIC
C2000-CL-ENTR-C-613-SFIC	Clutching	Entry/Office (F109)	Curved	613	Less SFIC
C2000-ENTR-C-613-SFIC	Non-clutching	Entry/Office (F109)	Curved	613	Less SFIC
C2000-ENTR-B-630-KDC	Non-clutching	Entry/Office (F109)	Ball	630	6-pin, Schlage C, KD
C2000-ENTR-B-613-KDC	Non-clutching	Entry/Office (F109)	Ball	613	6-pin, Schlage C, KD
C2000-ENTR-B-605-KDC	Non-clutching	Entry/Office (F109)	Ball	605	6-pin, Schlage C, KD
C2000-ENTR-B-630-SFIC	Non-clutching	Entry/Office (F109)	Ball	630	Less SFIC
C2000-ENTR-B-613-SFIC	Non-clutching	Entry/Office (F109)	Ball	613	Less SFIC
C2000-ENTR-B-605-SFIC	Non-clutching	Entry/Office (F109)	Ball	605	Less SFIC
C2000-CL-CLRM-R-626-KDC	Clutching	Classroom (F84)	Regular	626	6-pin, Schlage C, KD
C2000-CLRM-R-626-KDC	Non-clutching	Classroom (F84)	Regular	626	6-pin, Schlage C, KD
C2000-CL-CLRM-R-613-KDC	Clutching	Classroom (F84)	Regular	613	6-pin, Schlage C, KD
C2000-CLRM-R-613-KDC	Non-clutching	Classroom (F84)	Regular	613	6-pin, Schlage C, KD
C2000-CLRM-R-605-KDC	Non-clutching	Classroom (F84)	Regular	605	6-pin, Schlage C, KD
C2000-CL-CLRM-R-626-SFIC	Clutching	Classroom (F84)	Regular	626	Less SFIC
C2000-CLRM-R-626-SFIC	Non-clutching	Classroom (F84)	Regular	626	Less SFIC
C2000-CL-CLRM-R-613-SFIC	Clutching	Classroom (F84)	Regular	613	Less SFIC
C2000-CLRM-R-613-SFIC	Non-clutching	Classroom (F84)	Regular	613	Less SFIC
C2000-CLRM-R-605-SFIC	Non-clutching	Classroom (F84)	Regular	605	Less SFIC
C2000-CL-CLRM-C-626-KDC	Clutching	Classroom (F84)	Curved	626	6-pin, Schlage C, KD
C2000-CLRM-C-626-KDC	Non-clutching	Classroom (F84)	Curved	626	6-pin, Schlage C, KD
C2000-CL-CLRM-C-613-KDC	Clutching	Classroom (F84)	Curved	613	6-pin, Schlage C, KD
C2000-CLRM-C-613-KDC	Non-clutching	Classroom (F84)	Curved	613	6-pin, Schlage C, KD
C2000-CL-CLRM-C-626-SFIC	Clutching	Classroom (F84)	Curved	626	Less SFIC
C2000-CLRM-C-626-SFIC	Non-clutching	Classroom (F84)	Curved	626	Less SFIC
C2000-CL-CLRM-C-613-SFIC	Clutching	Classroom (F84)	Curved	613	Less SFIC
C2000-CLRM-C-613-SFIC	Non-clutching	Classroom (F84)	Curved	613	Less SFIC
C2000-CLRM-B-630-KDC	Non-clutching	Classroom (F84)	Ball	630	6-pin, Schlage C, KD
C2000-CLRM-B-613-KDC	Non-clutching	Classroom (F84)	Ball	613	6-pin, Schlage C, KD
C2000-CLRM-B-605-KDC	Non-clutching	Classroom (F84)	Ball	605	6-pin, Schlage C, KD
C2000-CLRM-B-630-SFIC	Non-clutching	Classroom (F84)	Ball	630	Less SFIC
C2000-CLRM-B-613-SFIC	Non-clutching	Classroom (F84)	Ball	613	Less SFIC
C2000-CL-STRM-R-626-KDC	Clutching	Storeroom (F86)	Regular	626	6-pin, Schlage C, KD
C2000-STRM-R-626-KDC	Non-clutching	Storeroom (F86)	Regular	626	6-pin, Schlage C, KD
C2000-CL-STRM-R-613-KDC	Clutching	Storeroom (F86)	Regular	613	6-pin, Schlage C, KD
C2000-STRM-R-613-KDC	Non-clutching	Storeroom (F86)	Regular	613	6-pin, Schlage C, KD
C2000-STRM-R-605-KDC	Non-clutching	Storeroom (F86)	Regular	605	6-pin, Schlage C, KD
C2000-CL-STRM-R-626-SFIC	Clutching	Storeroom (F86)	Regular	626	Less SFIC
C2000-STRM-R-626-SFIC	Non-clutching	Storeroom (F86)	Regular	626	Less SFIC

C2000 Series
Grade 2 cylindrical lock

Locksets

Product description	Lever feature	Function	Trim	Finish	Cylinder
C2000-CL-STRM-R-613-SFIC	Clutching	Storeroom (F86)	Regular	613	Less SFIC
C2000-STRM-R-613-SFIC	Non-clutching	Storeroom (F86)	Regular	613	Less SFIC
C2000-STRM-R-605-SFIC	Non-clutching	Storeroom (F86)	Regular	605	Less SFIC
C2000-CL-STRM-C-626-KDC	Clutching	Storeroom (F86)	Curved	626	6-pin, Schlage C, KD
C2000-STRM-C-626-KDC	Non-clutching	Storeroom (F86)	Curved	626	6-pin, Schlage C, KD
C2000-CL-STRM-C-613-KDC	Clutching	Storeroom (F86)	Curved	613	6-pin, Schlage C, KD
C2000-STRM-C-613-KDC	Non-clutching	Storeroom (F86)	Curved	613	6-pin, Schlage C, KD
C2000-CL-STRM-C-626-SFIC	Clutching	Storeroom (F86)	Curved	626	Less SFIC
C2000-STRM-C-626-SFIC	Non-clutching	Storeroom (F86)	Curved	626	Less SFIC
C2000-CL-STRM-C-613-SFIC	Clutching	Storeroom (F86)	Curved	613	Less SFIC
C2000-STRM-C-613-SFIC	Non-clutching	Storeroom (F86)	Curved	613	Less SFIC
C2000-STRM-B-630-KDC	Non-clutching	Storeroom (F86)	Ball	630	6-pin, Schlage C, KD
C2000-STRM-B-613-KDC	Non-clutching	Storeroom (F86)	Ball	613	6-pin, Schlage C, KD
C2000-STRM-B-605-KDC	Non-clutching	Storeroom (F86)	Ball	605	6-pin, Schlage C, KD
C2000-STRM-B-630-SFIC	Non-clutching	Storeroom (F86)	Ball	630	Less SFIC
C2000-STRM-B-613-SFIC	Non-clutching	Storeroom (F86)	Ball	613	Less SFIC
C2000-STRM-B-605-SFIC	Non-clutching	Storeroom (F86)	Ball	605	Less SFIC

Designs



Regular lever



Curved lever



Ball knob

Finishes



605



613



626



630

C2000 Series
Grade 2 cylindrical lock

Accessories

Latches: All latches are square corner with 1 1/8" x 2 1/4" faceplate. Grade 2 latches are square corner with 2 3/8" and 2 3/4" backsets available. Products with "234" in the description represent a 2 3/4" backset.

Product description	Function	Backset	Latch type	Finish
C2000-SL-630	Passage, Privacy	2 3/8"	Springlatch	630
C2000-SL-234-630	Passage, Privacy	2 3/4"	Springlatch	630
C2000-SL-613	Passage, Privacy	2 3/8"	Springlatch	613
C2000-SL-605	Passage, Privacy	2 3/8"	Springlatch	605
C2000-SL-234-605	Passage, Privacy	2 3/4"	Springlatch	605
C2000-DL-630	Entry/Office, Classroom, Storeroom	2 3/8"	Deadlatch	630
C2000-DL-234-630	Entry/Office, Classroom, Storeroom	2 3/4"	Deadlatch	630
C2000-DL-613	Entry/Office, Classroom, Storeroom	2 3/8"	Deadlatch	613
C2000-DL-605	Entry/Office, Classroom, Storeroom	2 3/8"	Deadlatch	605
C2000-DL-234-605	Entry/Office, Classroom, Storeroom	2 3/4"	Deadlatch	605

Strikes:

Product description	Function	Finish
C2000-RCFLS-630	Radius corner, full lip strike, 1 5/8" x 2 1/4"	630
C2000-RCFLS-613	Radius corner, full lip strike, 1 5/8" x 2 1/4"	613
C2000-ACLS-605	ANSI, curved lip strike, 1 1/4" x 4 7/8"	605
C2000-TS-605	T-strike, 1 1/4" x 2 3/4"	605

Tailpieces:

Product description	Function	Finish	Cylinder
C2000-TP-SFIC	SFIC 6 and 7 Pin with shielding spacer	N/A	N/A